

# A NEW SPECIES AND A NEW VARIETY OF *CULEX* FROM THE BELGIAN CONGO

BY

A. M. EVANS

(Received for publication 9 February, 1923)

The new species and variety of *Culex* described in the present paper occurred among two small collections of mosquitoes from the Belgian Congo, which were sent by Dr. Severin to this School for determination.

## *Culex moucheti*, n. sp. (fig. 1).

This species is named in honour of its discoverer, Dr. Mouchet.

*Head.* Scales bordering the eyes white, flat below, and becoming gradually narrower as they approach the vertex. Upright forked scales golden yellow in front, very dark brown behind, intermediate ones golden with very narrow black tips. Narrow curved scales silvery white. Bristles projecting over vertex golden yellow. Scales of proboscis, female palpi, and scales and hairs of male palpi dark sepia.

*Thorax.* Prothoracic lobes with whitish scales. Mesonotum dark brown with bronzy scales, apparently discoloured by dampness, and blackish bristles. Pale whitish scales on ante-scutellar space, scutellum, and medially just behind the head. Pleurae with green integument. Lower mesepimeron of type with one bristle socket on left side.

*Abdomen.* Tergites II to VII entirely covered with dark sepia scales, except at side of tergites IV to VII, where basal triangular patches of whitish scales may occur; these very small, except on segment VII. Tergite VIII with large irregular patch of whitish scales above. Sternites entirely whitish scaled.

*Legs.* Vestiture chiefly blackish-brown. Femora pale beneath; middle tibiae and tarsi in some specimens with whitish scales beneath, extending for the whole part of the length of the segments.

*Wings.* Plume scales on third vein ligulate, squames on costa and first vein with six to eight striae. First fork cell slightly longer than its petiole, its base distal to that of second fork cell.

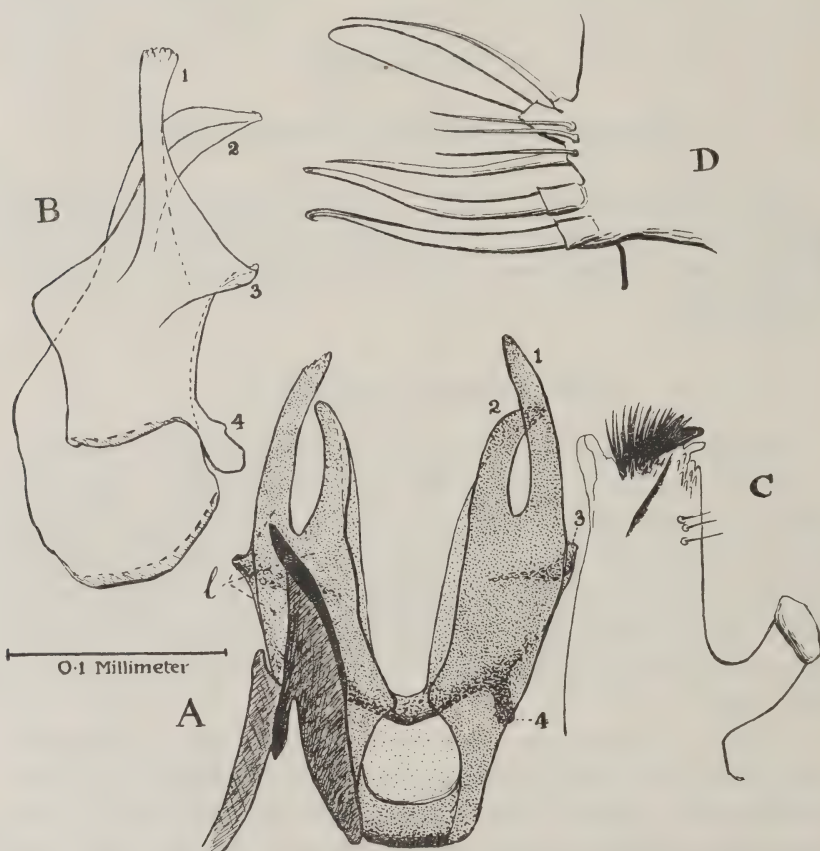


FIG. 1. *Culex moucbeti*, n.sp. Male hypopygium. *A*—phallosome, ventral aspect with left parameral plate and part of basal plate; 1, 2, 3, and 4—processes of phallosome, *l*—left side. *B*—left half of phallosome, postero-lateral aspect somewhat distorted, 1, 2, 3, and 4, as in *A*. *C*—tenth sternite, ventral aspect. *D*—lobe of side-piece.

*Male hypopygium* (fig. 1). Lobe of side-piece as in fig. 1, *d*. The occurrence of only one moderately stout rod between the leaf and the pair of very stout rods a constant feature in the five specimens examined. *Phallosome* (Christophers, 1922) or mesosome

(Edwards, 1920) (fig. 1, *a* and *b*) of simple structure, chitin of walls thin and uniform except in region of basal tooth (4). Each half of phallosome with two long terminal processes (1 and 2), the longer weakly serrated distally, a short pointed process (3) projecting dorso-laterally, and a chitinised tooth (4) at basal angle of dorsal wall. Tenth sternites as in fig. 1, *c*.

Type ♂, six co-type ♂♂, and three co-type ♀♀ from Stanleyville, Belgian Congo, 1922, Dr. Mouchet.\*

This species is one of the *pipiens* group of *Culex*, as defined by Edwards (1922). The hypopygial characters point to a relationship with *Culex pipiens*, L., and *C. trifilatus*, Edwards, but the absence of abdominal bands and of lines of white scales beneath the last two male palpal segments would seem to indicate affinities with the *decens* series of the group.

*Culex annulioris* var. *congolensis*, n. var.

*Male* resembling typical *C. annulioris*, Theo., in hypopygial characters, banding of palpi, proboscis and tarsi, and scaling of thorax, but with *abdomen entirely dark scaled above*, the median basal and lateral apical white markings characteristic of *annulioris* being entirely absent.

Type and co-type ♂♂ from Leopoldville, 1922, Dr. Duren.

#### REFERENCES

- CHRISTOPHERS, S. R. (1922). The development and structure of the terminal abdominal segments and hypopygium of the mosquito, with observations on the homologies of the terminal segments of the larva. *Ind. Journ. Med. Res.*, Vol. X, No. 2.
- EDWARDS, F. W. (1922). Mosquito Notes, III.D. *Bull. Ent. Res.*, Vol. XIII, Pt. I.

---

\* Since going to press two further ♂♂ of *Culex moucheti* have been received from Buta, Belgian Congo, November, 1922, Dr. Mouchet.